

Light efficiency:

45 Lumen/Watt

Light quality:

CRI: 95.7

Color temperature:

4012 K

Output: 555 lm

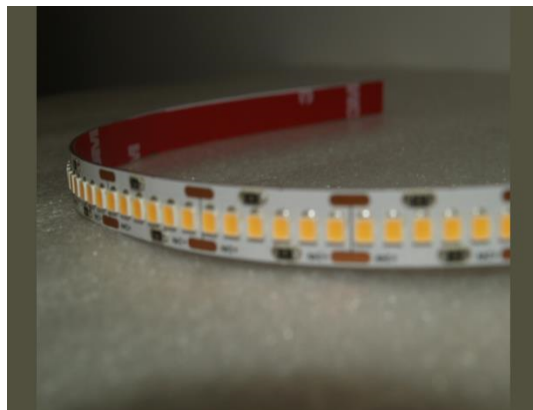
Peak: 184 cd

Power: 12.3 W

PF: 0.56

Beam angle

117.3°



Product name:

Flex One HO Interior 4000K

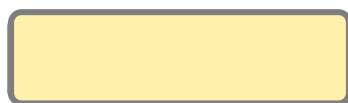
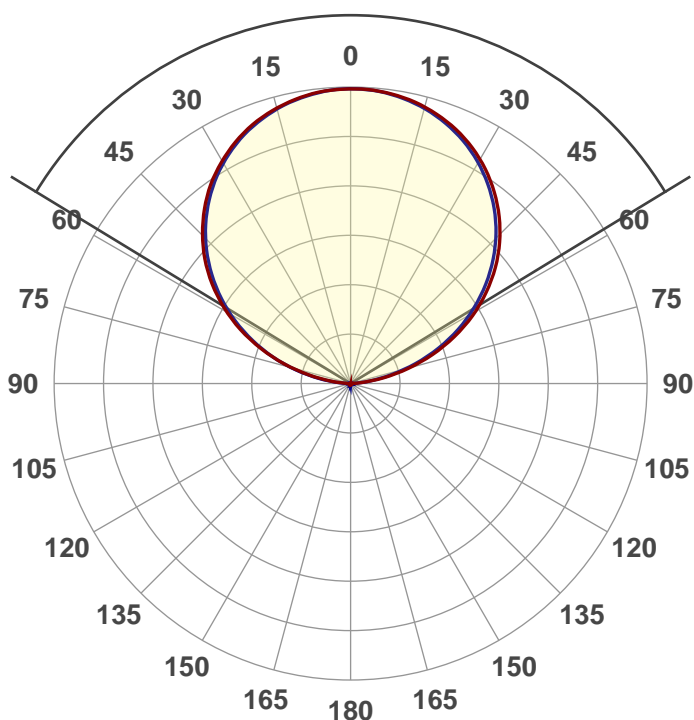
Test:

Full On (1ft of Flex)

Date and time:

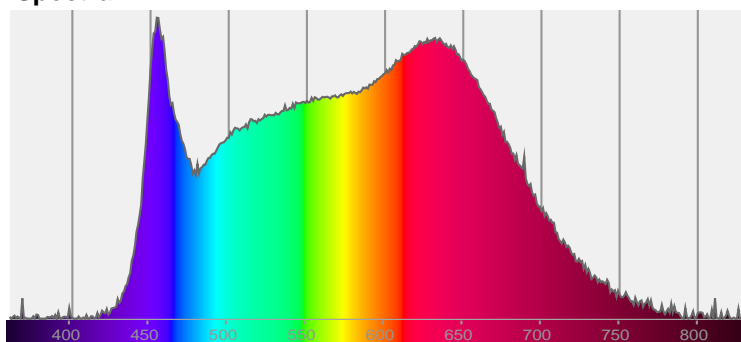
4/10/2017

Description:

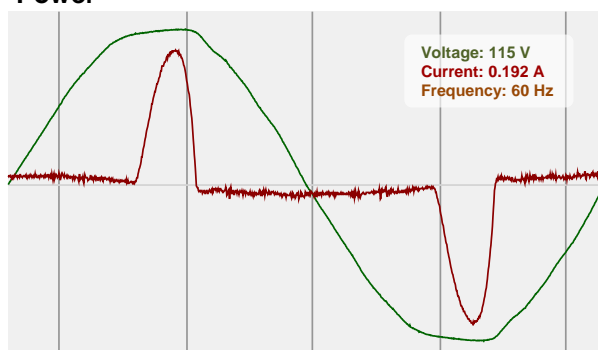


CIE 1931  
x: 0.380  
y: 0.374

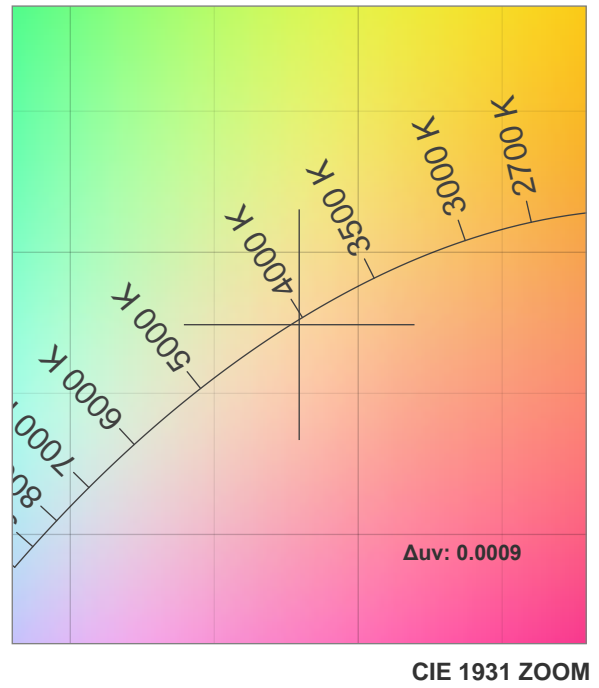
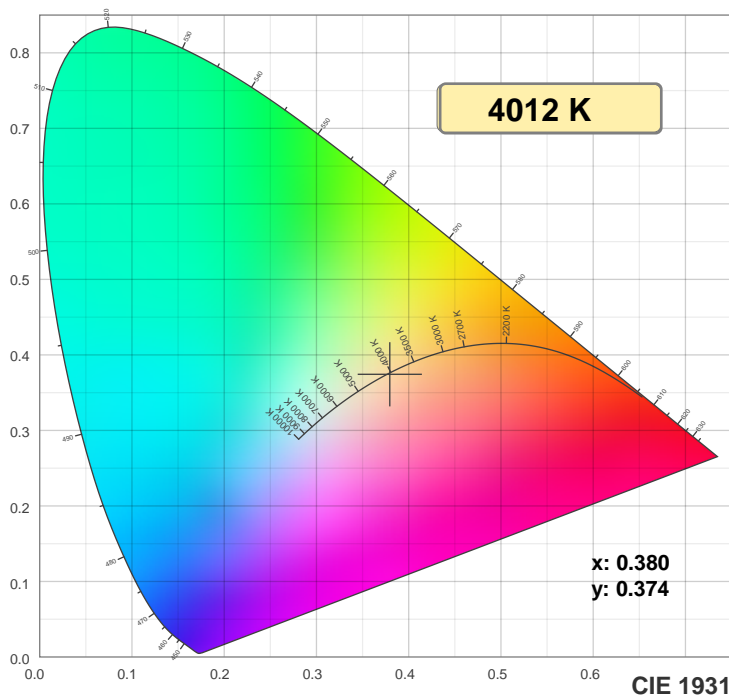
Spectra



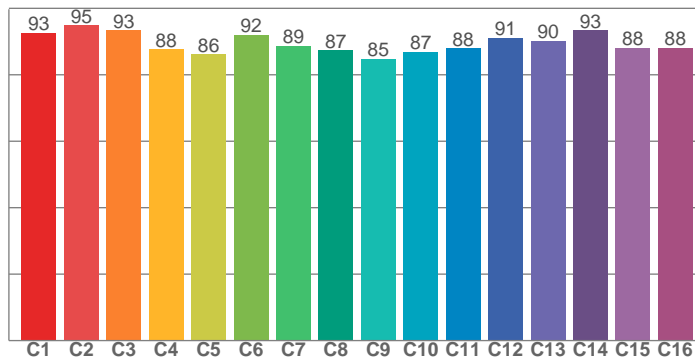
Power



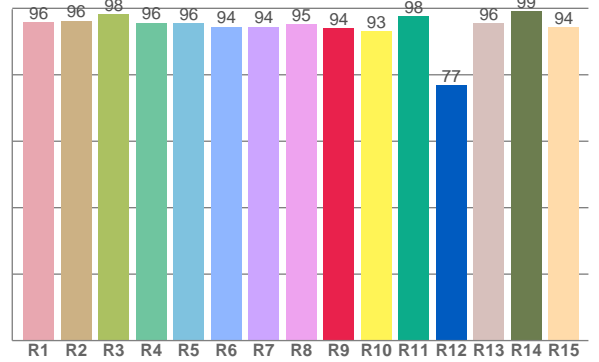
## Color details



**TM30: 89.3**



**CRI: 95.7 (R1-R8)**



CRI R values, only R1-R8 are used to calculate final CRI value

R1	R2	R3	R4	R5	R6	R7	R8	R9	R10	R11	R12	R13	R14	R15
95.9	96.2	98.3	95.7	95.6	94.5	94.5	95.2	94.0	93.1	97.6	76.8	95.6	99.1	94.3

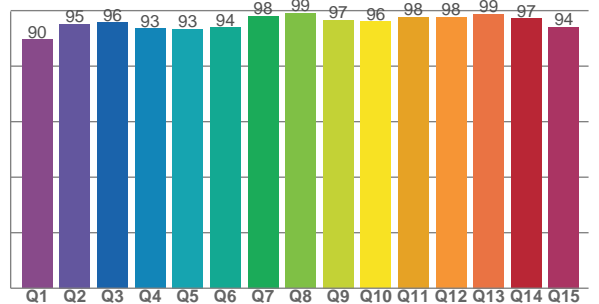
TM30 C values, 16 binned values out of total of 99 C values

C1	C2	C3	C4	C5	C6	C7	C8	C9	C10	C11	C12	C13	C14	C15	C16
92.6	94.9	93.4	87.6	86.1	92.0	88.7	87.3	84.8	87.0	87.9	91.1	90.3	93.3	88.0	88.0

CQS Q values

Q1	Q2	Q3	Q4	Q5	Q6	Q7	Q8	Q9	Q10	Q11	Q12	Q13	Q14	Q15
89.5	95.2	95.7	93.5	93.4	93.9	98.1	99.1	96.6	96.1	97.6	97.7	98.8	97.2	94.0

**CQS: 95.1**



## Color parameters

Color temperature	Color rendering index	Red component	Color fidelity	Color gamut	Color quality scale	Color coordinate cie 1931	Color coordinate cie 1931	Color coordinate	Color coordinate	Color divition from black body
CCT	CRI	CRI R9	TM30 Rf	TM30 Rg	CQS	x	y	u	v	$\Delta uv$
4012 K	95.7	94.0	89.3	98.1	95.1	0.380	0.374	0.225	0.334	0.0009

## TM30 details

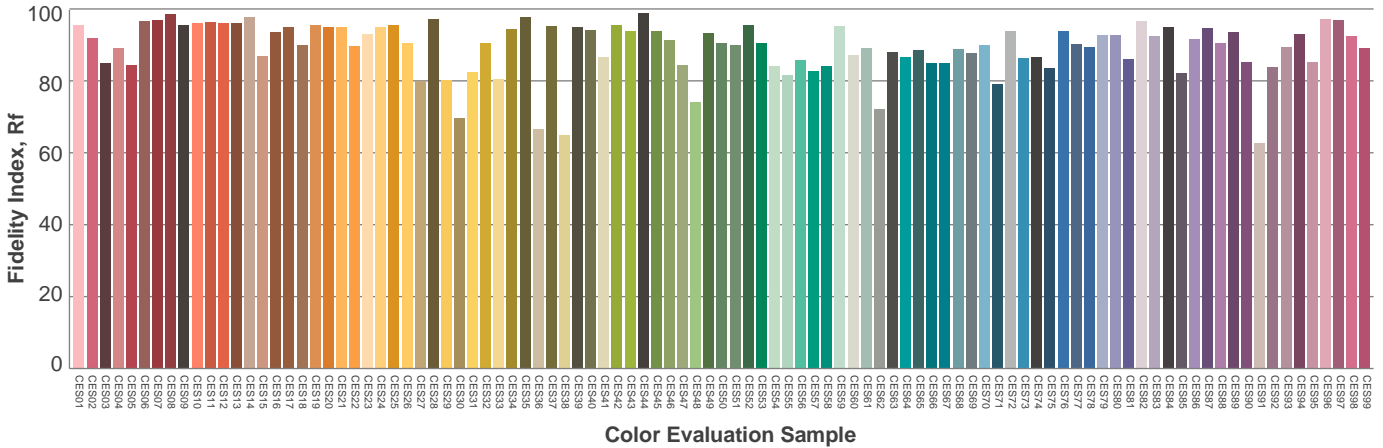
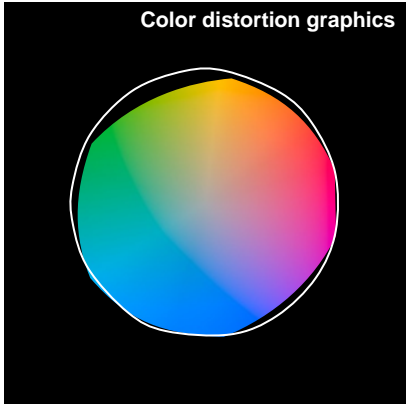
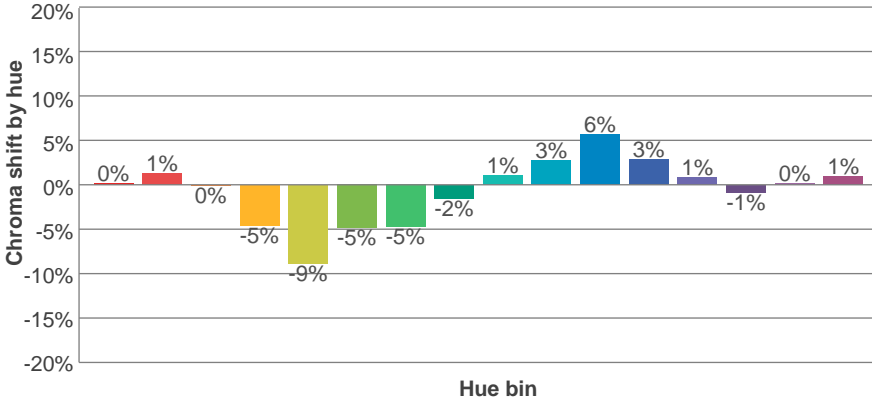
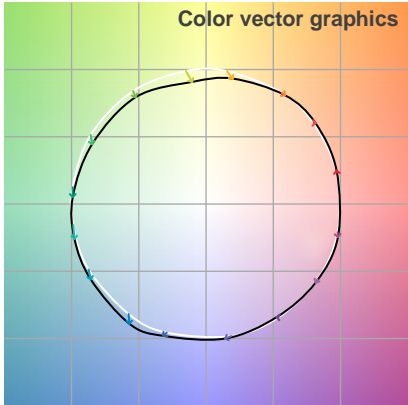
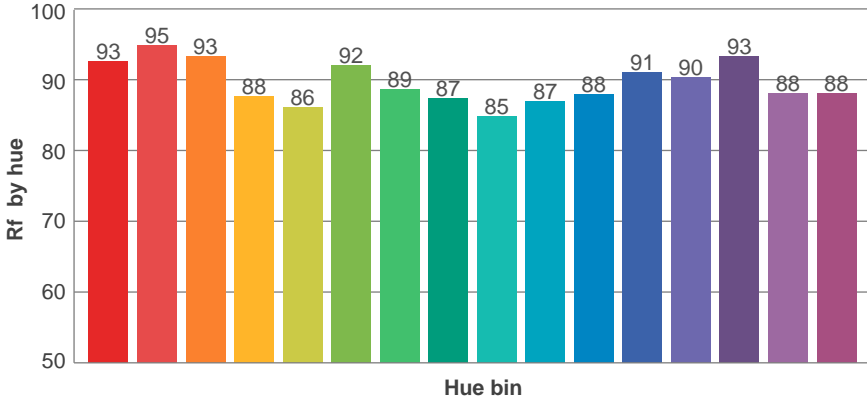
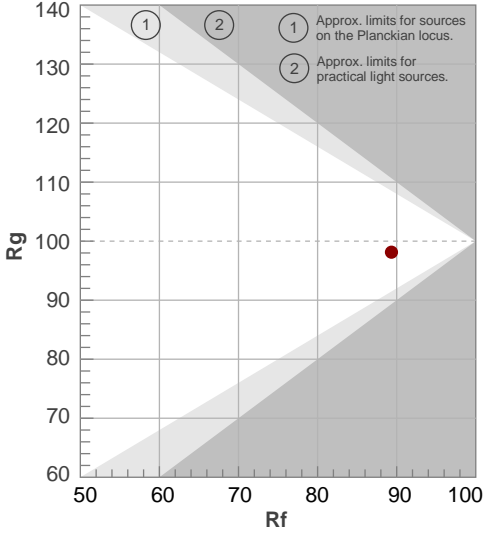
**Rf 89.3**

## Fidelity index $R_f$

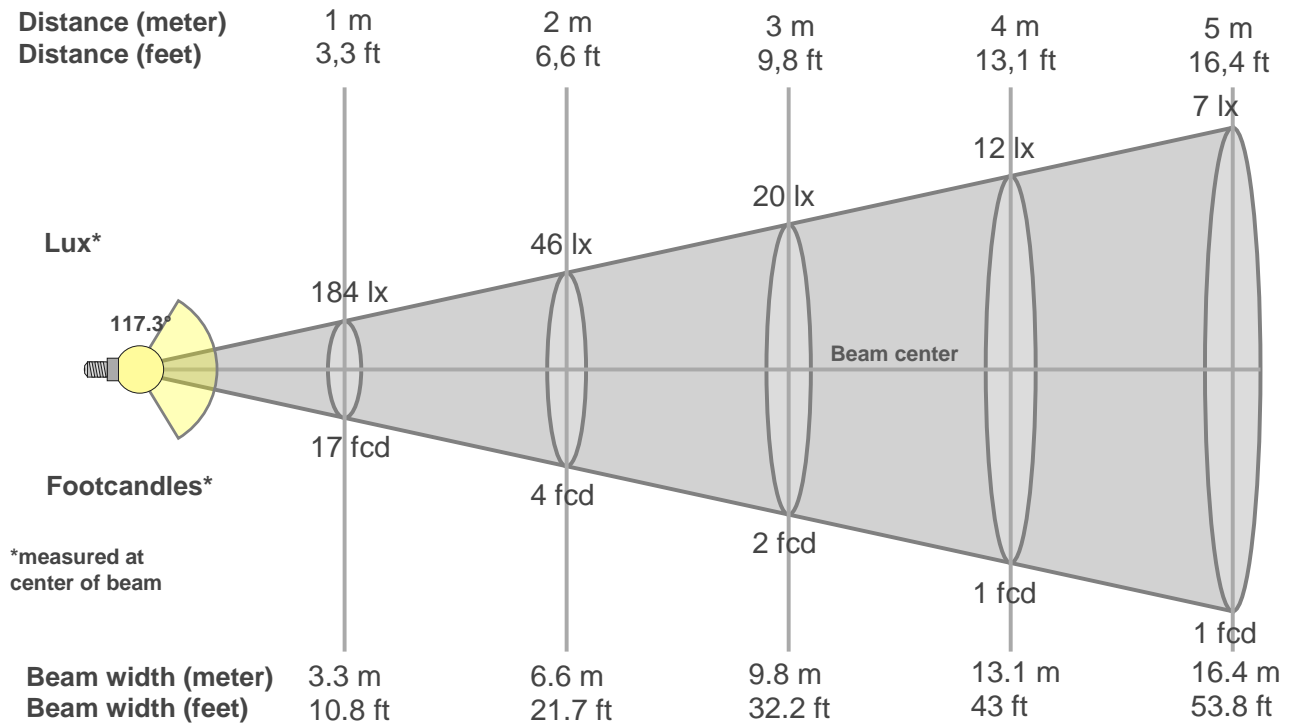
# Rg 98.1

# Gammut index Rg

		Graphic shifts (%)	
Hue Bin	$R_i$	Chroma	Hue
1	93	0%	2%
2	95	1%	-1%
3	93	0%	-3%
4	88	-5%	-5%
5	86	-9%	-3%
6	92	-5%	1%
7	89	-5%	5%
8	87	-2%	7%
9	85	1%	10%
10	87	3%	7%
11	88	6%	4%
12	91	3%	-2%
13	90	1%	-5%
14	93	-1%	-1%
15	88	0%	-3%
16	88	1%	-3%



## Beam details



### Beam intensities from 1-20m

1m	2m	3m	4m	5m	6m	7m	8m	9m	10m	11m	12m	13m	14m	15m	16m	17m	18m	19m	20m
3.3ft	6.6ft	9.8ft	13.1ft	16.4ft	19.7ft	23ft	26.2ft	29.5ft	32.8ft	36.1ft	39.4ft	42.7ft	45.9ft	49.2ft	52.5ft	55.8ft	59.1ft	62.3ft	65.6ft
184lx	46lx	20lx	12lx	7lx	5lx	4lx	3lx	2lx	2lx	2lx	1lx	1lx	1lx	1lx	1lx	1lx	1lx	1lx	0lx
17.1fcd	4.3fcd	1.9fcd	1.1fcd	0.7fcd	0.5fcd	0.3fcd	0.3fcd	0.2fcd	0.2fcd	0.1fcd	0.1fcd	0.1fcd	0.1fcd	0.1fcd	0.1fcd	0.1fcd	0.1fcd	0fcd	0fcd

### Intensities in 0° c-plane

0°	5°	10°	15°	20°	25°	30°	35°	40°	45°	50°	55°	60°	65°	70°	75°	80°	85°	90°	95°
184	184	182	178	174	168	161	152	142	131	119	105	89	73	56	38	22	8	1	0
100%	100%	99%	97%	94%	91%	87%	83%	77%	71%	64%	57%	48%	40%	30%	21%	12%	4%	1%	0%

### Intensities in 90° c-plane

0°	5°	10°	15°	20°	25°	30°	35°	40°	45°	50°	55°	60°	65°	70°	75°	80°	85°	90°	95°
184	184	181	178	173	167	159	150	140	128	115	102	87	71	55	39	23	9	1	0
100%	100%	98%	96%	94%	90%	86%	81%	76%	70%	63%	55%	47%	39%	30%	21%	12%	5%	1%	0%

### Intensities in 180° c-plane

0°	5°	10°	15°	20°	25°	30°	35°	40°	45°	50°	55°	60°	65°	70°	75°	80°	85°	90°	95°
184	184	182	179	175	169	162	153	143	132	120	105	90	74	56	38	22	7	0	0
100%	100%	99%	97%	95%	92%	88%	83%	78%	72%	65%	57%	49%	40%	30%	21%	12%	4%	0%	0%

### Intensities in 270° c-plane

0°	5°	10°	15°	20°	25°	30°	35°	40°	45°	50°	55°	60°	65°	70°	75°	80°	85°	90°	95°
184	184	182	178	173	167	160	151	140	128	115	101	86	70	53	35	19	7	1	0
100%	100%	99%	97%	94%	91%	87%	82%	76%	70%	63%	55%	47%	38%	29%	19%	11%	4%	1%	0%

Beam angle 50%	Field angle 10%	Cutoff angle 2,5%	Intensity ratio in 120° cone	Intensity ratio in 90° cone
117.3°	161.9°	173.7°	0.8%	0.5%

## UGR

## Glare Evaluation According to UGR

p Ceiling	70	70	50	50	30	70	70	50	50	30
p Walls	50	30	50	30	30	50	30	50	30	30
p Floor	20	20	20	20	20	20	20	20	20	20
Room size X      Y	Viewing direction at right angles to lamp axis					Viewing direction parallel to lamp axis				
n/a	n/a	n/a	n/a	n/a	n/a	n/a	n/a	n/a	n/a	n/a
n/a	n/a	n/a	n/a	n/a	n/a	n/a	n/a	n/a	n/a	n/a
n/a	n/a	n/a	n/a	n/a	n/a	n/a	n/a	n/a	n/a	n/a
n/a	n/a	n/a	n/a	n/a	n/a	n/a	n/a	n/a	n/a	n/a
n/a	n/a	n/a	n/a	n/a	n/a	n/a	n/a	n/a	n/a	n/a
n/a	n/a	n/a	n/a	n/a	n/a	n/a	n/a	n/a	n/a	n/a
n/a	n/a	n/a	n/a	n/a	n/a	n/a	n/a	n/a	n/a	n/a
n/a	n/a	n/a	n/a	n/a	n/a	n/a	n/a	n/a	n/a	n/a
n/a	n/a	n/a	n/a	n/a	n/a	n/a	n/a	n/a	n/a	n/a
n/a	n/a	n/a	n/a	n/a	n/a	n/a	n/a	n/a	n/a	n/a
n/a	n/a	n/a	n/a	n/a	n/a	n/a	n/a	n/a	n/a	n/a
n/a	n/a	n/a	n/a	n/a	n/a	n/a	n/a	n/a	n/a	n/a
n/a	n/a	n/a	n/a	n/a	n/a	n/a	n/a	n/a	n/a	n/a
n/a	n/a	n/a	n/a	n/a	n/a	n/a	n/a	n/a	n/a	n/a
n/a	n/a	n/a	n/a	n/a	n/a	n/a	n/a	n/a	n/a	n/a
n/a	n/a	n/a	n/a	n/a	n/a	n/a	n/a	n/a	n/a	n/a
n/a	n/a	n/a	n/a	n/a	n/a	n/a	n/a	n/a	n/a	n/a
n/a	n/a	n/a	n/a	n/a	n/a	n/a	n/a	n/a	n/a	n/a
n/a	n/a	n/a	n/a	n/a	n/a	n/a	n/a	n/a	n/a	n/a
n/a	n/a	n/a	n/a	n/a	n/a	n/a	n/a	n/a	n/a	n/a
Variation of the observer position for the luminaire distance S										
n/a	n/a					n/a				
n/a	n/a					n/a				
n/a	n/a					n/a				
Standard table	n/a					n/a				
Correction summand	n/a					n/a				
Corrected glare indices referring to 555 lm total luminous flux										

UGR error. Make sure you have installed the LDT editor from Dialux.

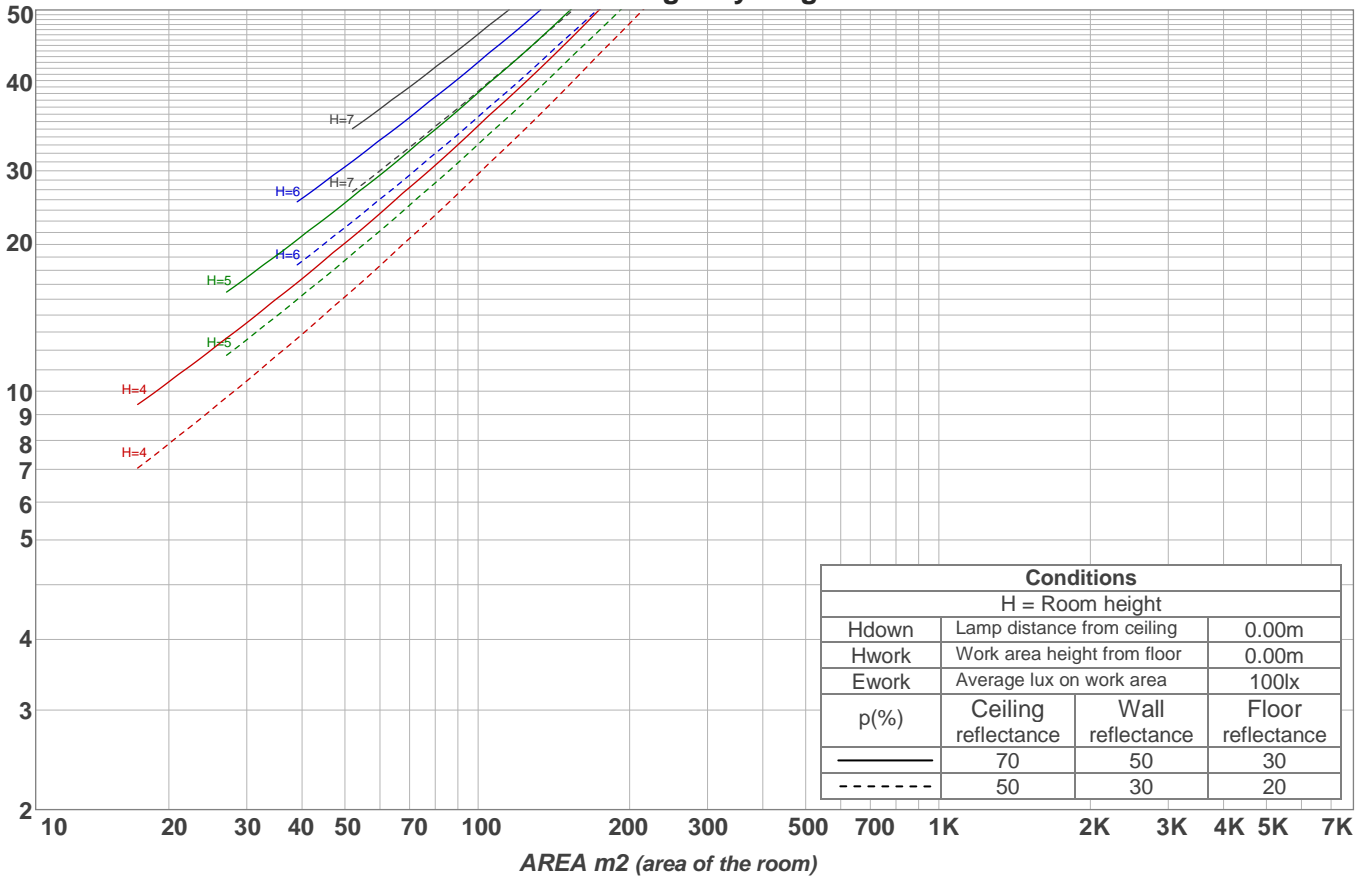
# Light planning

## Coefficients of Utilization

Ceiling reflectance	80				70				50			30			10			0
Wall reflectance	70	50	30	10	70	50	30	10	50	30	10	50	30	10	50	30	10	0
Floor reflectance	20	20	20	20	20	20	20	20	20	20	20	20	20	20	20	20	20	0
RCR	(RCR: Room Cavity Ratio) Room Values are expressed as percentage of Lumens delivered to the task surface																	
0	119	119	119	119	116	116	116	116	111	111	111	106	106	106	102	102	102	100
1	109	104	99	95	106	101	97	94	97	94	91	93	90	88	89	87	85	83
2	99	90	83	77	96	88	82	76	85	79	75	81	77	73	78	74	71	69
3	90	79	71	64	87	77	70	63	74	68	62	71	66	61	69	64	60	58
4	82	70	61	54	80	68	60	54	66	59	53	63	57	52	61	56	51	49
5	75	62	53	46	73	61	52	46	59	51	45	57	50	45	55	49	44	42
6	69	56	47	40	67	55	46	40	53	45	40	51	44	39	50	44	39	37
7	64	51	42	35	62	50	41	35	48	41	35	47	40	35	45	39	34	32
8	60	46	37	32	58	45	37	31	44	37	31	43	36	31	41	35	31	29
9	56	42	34	28	54	42	34	28	40	33	28	39	33	28	38	32	28	26
10	52	39	31	26	51	38	31	26	37	30	25	36	30	25	35	29	25	23

LAMPS (number of lamps)

## Luminaire budgetary diagram



## Zonal Lumen Summary

0°-10°	10°-20°	20°-30°	30°-40°	40°-50°	50°-60°	60°-70°	70°-80°	80°-90°
17.5 lm	50.4 lm	77.4 lm	94.9 lm	100 lm	92.1 lm	71.0 lm	39.9 lm	9.55 lm
90°-100°	100°-110°	110°-120°	120°-130°	130°-140°	140°-150°	150°-160°	160°-170°	170°-180°
0.323 lm	0.247 lm	0.280 lm	0.284 lm	0.292 lm	0.242 lm	0.189 lm	0.126 lm	0.044 lm